

# Join us in Kent for the expertise you need.

Finding the right location isn't just about locating the right office or factory site with space to grow. Across Kent and Medway, you'll discover existing networks of expertise to support your success.

From creative and digital to manufacturing; life sciences to food and drink; construction to distribution, this is a place where businesses like yours are already established building strength in numbers.

Kent and Medway is also a place where the support you will need from marketing to legal support and all the stops along the supply chain is easy to find – an ecosystem of success built for getting things done.

Add in the advantages of being on the doorstep of London and Europe – and it's easy to see why the region is known as a gateway to success in the South East – a place focused on the next level.

## Join us in Kent

Get in touch today:

 Locate in Kent

 @LocateInKent

 [www.locateinkent.com](http://www.locateinkent.com)





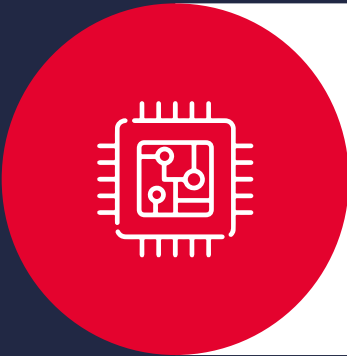
JOIN US IN KENT



Creative  
& digital

10,000 jobs

Locate in Kent has helped create over **10,000 jobs** in the creative sector and assisted over **177 companies** in the industry to relocate or expand into Kent.



50.8%

Thanet has experienced a **doubling** in the number of **technology organisations** based in the district over the last five years.



8.2%

The percentage increase in the number of creative jobs over the past **five years**.

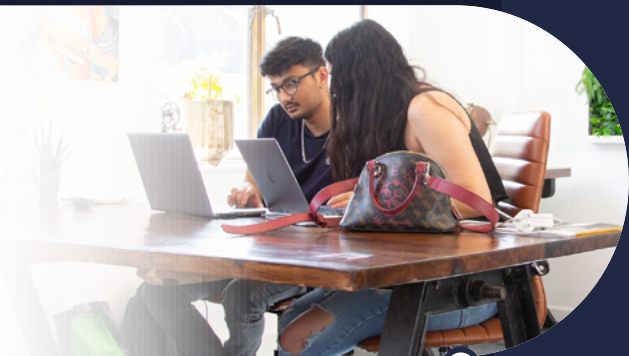


One of the **biggest clusters of technology focused businesses** in the South East is at Kent Science Park.



101,700

The number of **creative and digital companies** located in South East England.



Tunbridge Wells is one of the **UK's top creative hotspots** with a thriving cluster of **910 creative and cultural businesses**.



330%

Increase over the past **five years**.

6,150

The number of **creative enterprises** located in Kent.







**Life Science**

**67,000**

The South East had the highest employment of all regions in the UK as of 2021, accounting for **24% of all employment** in the life science sector.



**Manufacturing**

**18,815**

The number of **manufacturing companies** located in the South East.



**59,500**

The number of jobs supported by the life science sector across Kent and Medway, accounting for **9.3% of all jobs**.



**3,140**

The number of manufacturing enterprises in Kent, an increase of **3.1% over the last five years**. Maidstone district has the highest number (**380 enterprises**) Swale, the highest proportion (**7%, 360 enterprises**).





**11,935**

The South East has the **second highest number of life science enterprises** after London (15,335).






**35,000**

The number of **manufacturing jobs** in Kent.





**28%**

The increase in Kent's Life Science sector over the **last two years** with a high proportion of life science jobs in districts of **Dover** and **Sevenoaks** involved in research than national average.

**1,710**

The number of life science enterprises in Kent in 2022 accounting for **2.6% of all enterprises**.





**Food & Drink**

**2,310**

The number of food and drink production enterprises across Kent and Medway as at 2021, accounting for **3.1% of all enterprises** in the region.



Around **1 in 4.5** British apples come from farms owned by **AC Goatham & Sons** in Medway.



**11,560**

The number of **food and drink production companies** located in South East England.



**450**

The number of **food and drink enterprises** in Ashford borough, the highest number for Kent and Medway. British food manufacturer, Premier Foods and English wine producer, Chapel Down are based here.



**16,000**

The number of people **employed in the food and drink production sector** in Kent and Medway.



NIAB at East Malling is the **UK centre for innovation and research on horticultural crops and plants** and their interactions with the environment, with an **international reputation** for research on perennial fruit crops.



Berry Gardens based in Kent is the UK's **leading grower-owned co-operative**, growing berries, cherries and plums since 1972.



The **largest greenhouse complex in the UK**, Thanet Earth, covers **90 hectares of land** and grows tomatoes, peppers and cucumbers across **six greenhouses**.







**Construction**

**13,780**

The total number of construction industry enterprises in Kent and Medway as of March 2022 compared to **61,335** across the South East.





**49,000**

The number of jobs in construction in Kent, accounting for **7.7%** of all jobs.






**17.8%**

Kent has a higher proportion of construction enterprises than the South East (**14.9%**) and England (**13.6%**).






**21.9%**

The percentage **five-year growth** in the number of construction enterprises in Kent and Medway.

The Thames Gateway districts of Dartford (**22.6%**), Gravesham (**22.3%**) and Swale (**20.4%**) have the highest concentration of construction enterprises in Kent.





**Distribution**

**3,070**

The number of **transportation and storage enterprises** in Kent, as of March 2022, with **16,290** across the South East.





**29.8%**

The percentage growth in the **number of transportation and storage enterprises** over the last five years.

**41,500**

The number of people **employed** in this sector in Kent as of 2021.





**11.6%**

The percentage increase over the past five years in the **number of people employed** within the transportation and storage sector in Kent and Medway.





# Kent and Medway the right location

**72%**

cheaper  
commercial  
property\*  
\*compared  
to London

**1.8 million**  
potential customers

**68**

infrastructure  
& commercial  
development sites



2 science parks



Gateway to  
London and  
Europe

**33%**

lower house  
prices



17 minutes from  
the capital by train

**70,000 +**

companies already here



4 motorways

**Join us in Kent**  
Get in touch today:

**in** Locate in Kent

**🐦** @LocateInKent

**💻** [www.locateinkent.com](http://www.locateinkent.com)



**Locate in Kent**

